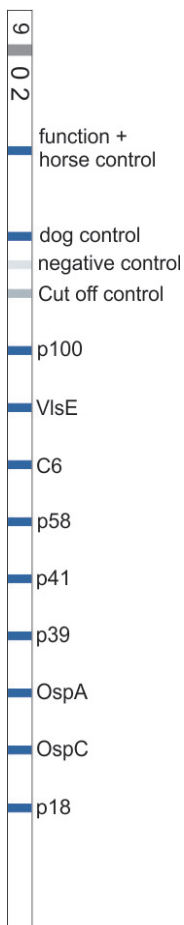




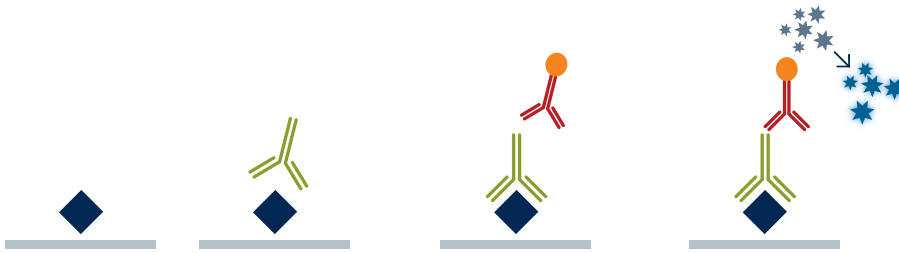
MegaLINE® BORRELIA IgG

LINE immunoassay for the detection of IgG antibodies against *Borrelia burgdorferi* in plasma and serum of the dog and serum of the horse

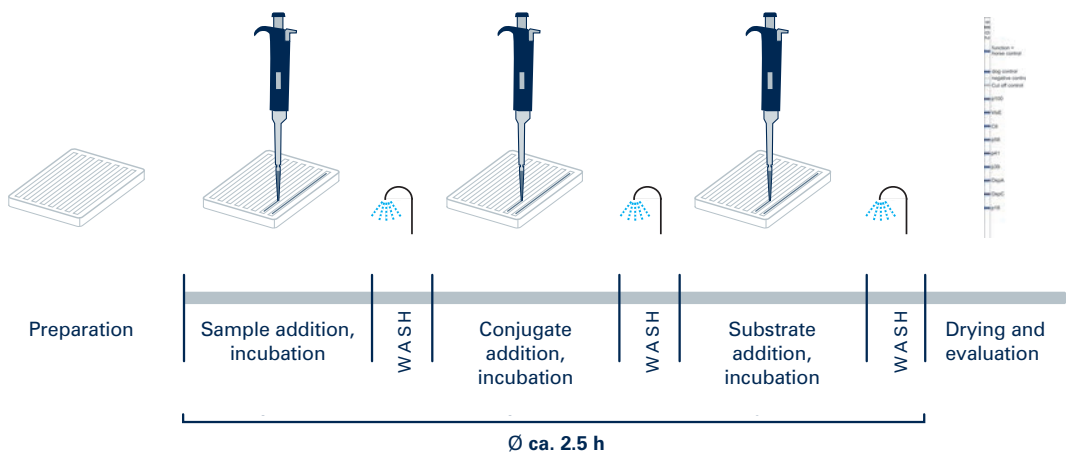


- Highly specific: Borrelia specific recombinant antigens (including C6 and VlsE)
- Routine and confirmation diagnostics
- Mix conjugate: Parallel analysis of dog plasma/serum and horse serum
- Integrated Cut off and function control
- Visual or software supported evaluation
- Dog: Sensitivity 85,2 % & Specificity 90,4 %
Horse: Sensitivity 100 % & Specificity 87,0 %
- Format: 20 tests or 12×20 tests; ready to use

Test principle



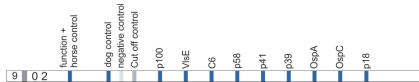
Test procedure



Test evaluation



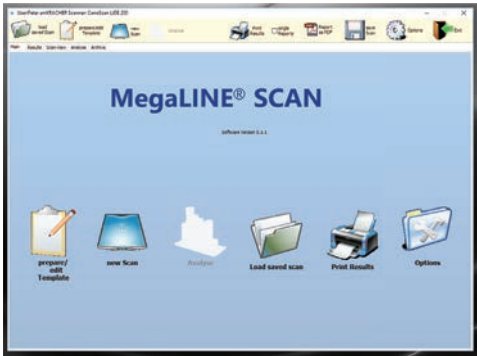
Visual



Comparison and evaluation of the bands
↶ reference strip



Software supported evaluation
MegaLINE® SCAN



+



1. Create Template

- Enter sample number / load sample list
- Print

2. Fix LINE immunoassay strips on Template

9 0 2

MegaLINE® BORRELIA IgG

Lot-No.:
 Date:
 Performer:
 Scan-ID:

MegaLINE®scan
Version 5.1.2T 5

Strip No.	Controls	Serum Sample	Name	p100	VtE	C6	p68	p41	p39	Cp3A	Cp3C	p18	Interpretation
1		1234											

3. Scanning and automatic evaluation

MegaLINE®BORRELIA IgG

Lot-No.:
 Date:
 Performer:
 Scan-ID:

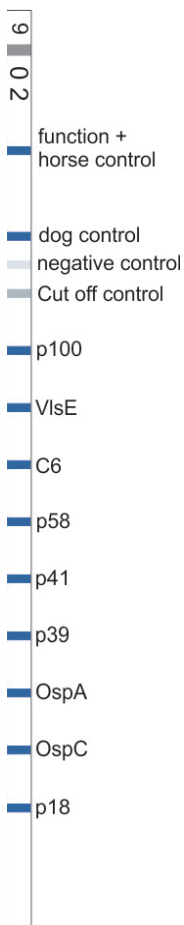
MegaLINE®scan
Version 5.1.2T 5

Strip No.	Type	controls	Serum Sample	Name	p100	VtE	C6	p68	p41	p39	Cp3A	Cp3C	p18	Interpretation
1	Dog				0,4	0,2	0,1	0,2	4,9					Dog:Impfung
2	Dog				14	6,0	4,6	6,2	0,7	3,4			10	Dog:Infektion

4. Save and print evaluation

- Single report
- Overall report

New version with VlsE and C6



Advantages of the C6 antibody detection

- Early marker of a Borrelia infection (21–35 days p. i.)
positive C6 result → active Borrelia infection
- In untreated dogs detectable for at least 12 months
- Decrease of C6 antibody concentration 3–6 months after therapy start
- No cross reaction with vaccination antibodies (differentiation field infection and vaccination)
- No cross reaction with other spirochetes (e. g. *Leptospira*)

Safe identification of infection by combined C6 and VlsE antibody detection

Application of the MegaLINE® BORRELIA IgG

1. With suspicion for Borrelia infection: One-Step-Diagnostics (repeated **MegaLINE®** testing at an interval of 4 weeks)
2. Classical Two-Step-Diagnostics: Confirmation test for ELISA/IFAT/Rapid test

MEGACOR Diagnostik GmbH

Lochauer Str. 2 – 6912 Hörbranz – AUSTRIA

www.megacor.com –  info@megacor.at –  +43 5573 85400 –  +43 5573 85400-4