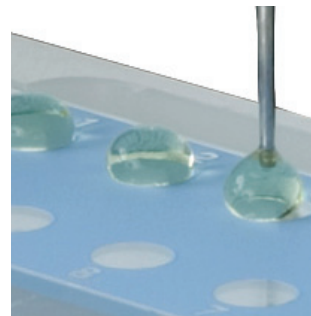
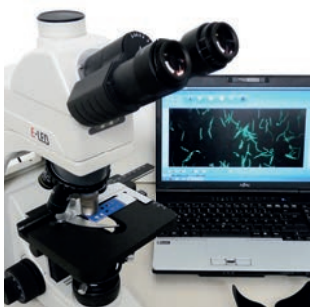


# MegaFLUO® VET

## Veterinary tests with laboratory precision

Indirect immunofluorescence test for the semiquantitative detection of specific IgG / IgM antibodies in plasma or serum of different animals



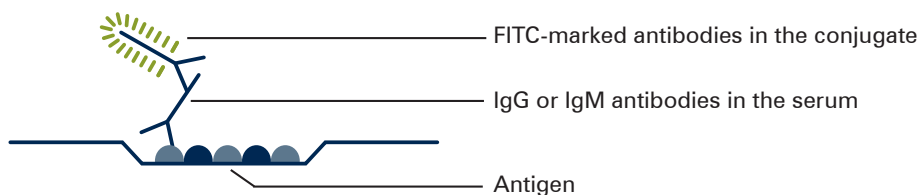
- Gold Standard for antibody detection
- Quantitative determination of the final titre
- Acute infection detection by 2–4-fold titre increase in the serum pair (within 2–4 weeks)
- For all species by use of antibody-specific detector conjugates
- Format: Test-kit or 10 slides or 50 slides  
Single components (Positive Control, Negative Control, IgG / IgM Conjugate, Mounting medium)

## Test principle

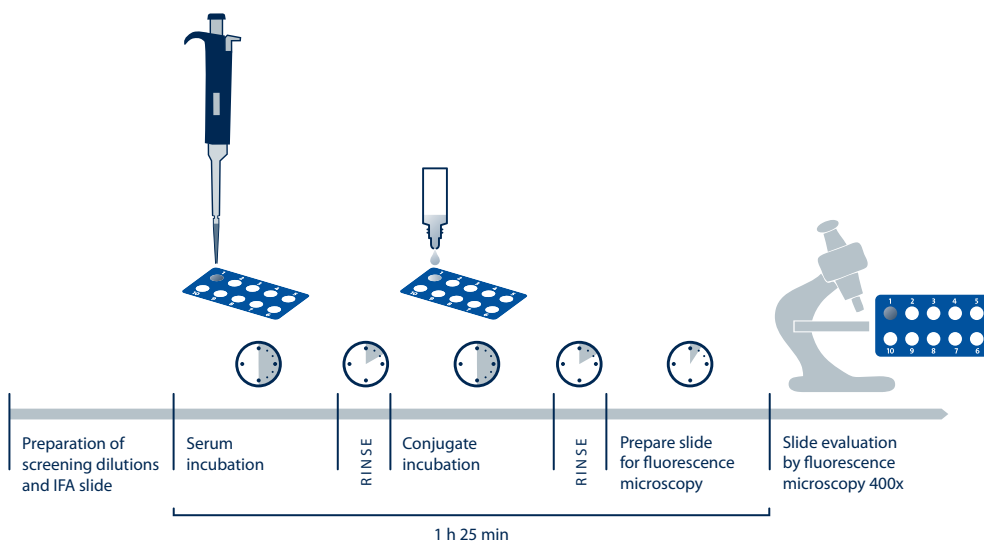
For the indirect immunofluorescence test (IFT), diluted plasma or serum is dropped onto the slide wells to allow an antigen-antibody reaction at 37°C in case of a positive sample.

By subsequent washing, non-bound unspecific serum proteins are washed off. In the next step, species-specific fluorescein-marked FLUO FITC antibodies in the conjugate bind to the antigen-antibody complexes.

Evaluation is done with a fluorescence microscope (filter system for FITC) with 400× magnification.



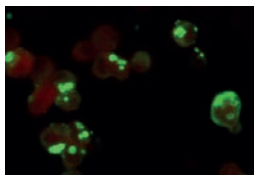
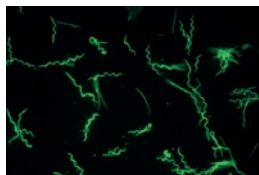
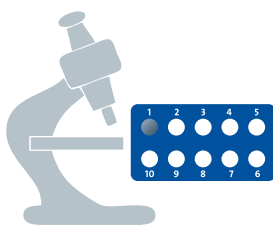
## Test procedure



## Test evaluation

### Positive illustrations

(e.g. *Borrelia*, *Ehrlichia canis*, *Toxoplasma gondii*)





### Dog

MegaFLUO® ANA HEp2  
MegaFLUO® ANAPLASMA ph  
MegaFLUO® BABESIA canis  
MegaFLUO® BORRELIA canis  
MegaFLUO® BRUCELLA canis  
MegaFLUO® CDV  
MegaFLUO® CHV  
MegaFLUO® COXIELLA burnetii  
MegaFLUO® CPV  
MegaFLUO® EHRLICHIA canis  
MegaFLUO® EHRLICHIA chaffeensis \*  
MegaFLUO® ENCEPHALITOOZON c. \*  
MegaFLUO® HCC  
MegaFLUO® LEISH  
MegaFLUO® LEPTOSPIRA  
MegaFLUO® NEOSPORA caninum  
MegaFLUO® RICKETTSIA conorii  
MegaFLUO® RICKETTSIA massiliae \*  
MegaFLUO® RICKETTSIA raoultii \*  
MegaFLUO® RICKETTSIA rickettsii  
MegaFLUO® TOXOPLASMA g.



### Cat

MegaFLUO® BARTONELLA henselae  
MegaFLUO® CHLAM felis  
MegaFLUO® COXIELLA burnetii \*  
MegaFLUO® ENCEPHALITOOZON c. \*  
MegaFLUO® FCoV  
MegaFLUO® FCV  
MegaFLUO® FHV  
MegaFLUO® FIV  
MegaFLUO® FRANCISELLA tularensis \*  
MegaFLUO® LEISH \*  
MegaFLUO® PAN  
MegaFLUO® TOXOPLASMA g.



### Rodent

MegaFLUO® BABESIA microti  
MegaFLUO® COXIELLA burnetii \*  
MegaFLUO® EHRLICHIA muris \*  
MegaFLUO® ENCEPHALITOOZON c.  
MegaFLUO® FRANCISELLA tularensis \*



### Bird

MegaFLUO® CHLAM psittaci \*  
MegaFLUO® COXIELLA burnetii \*



### Horse

MegaFLUO® ANAPLASMA ph  
MegaFLUO® BABESIA caballi  
MegaFLUO® BORRELIA horse  
MegaFLUO® EHV I+IV  
MegaFLUO® ENCEPHALITOOZON c. \*  
MegaFLUO® THEILERIA equi



### Cattle/ Calf

MegaFLUO® BABESIA bigemina \*  
MegaFLUO® BABESIA bovis  
MegaFLUO® BABESIA divergens \*  
MegaFLUO® BESNOITIA besnoiti  
MegaFLUO® NEOSPORA caninum



### Sheep

MegaFLUO® FRANCISELLA tularensis \*  
MegaFLUO® LISTERIA monocytogenes



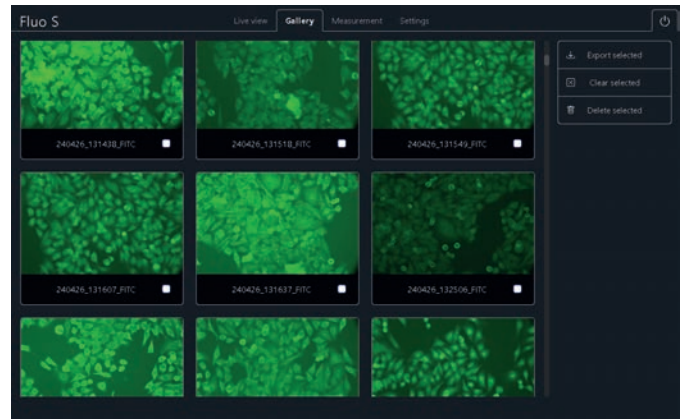
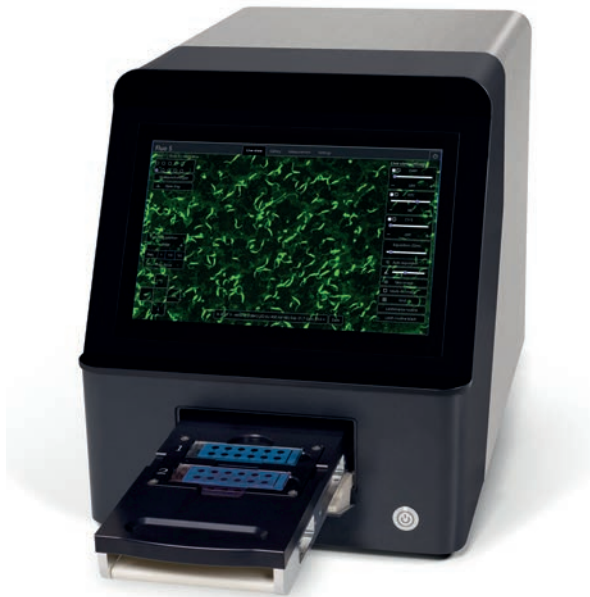
### Pig

MegaFLUO® LAWSONIA intracellularis \*

\* only as slides, no test-kit!

# MegaFLUO® ScanVet S

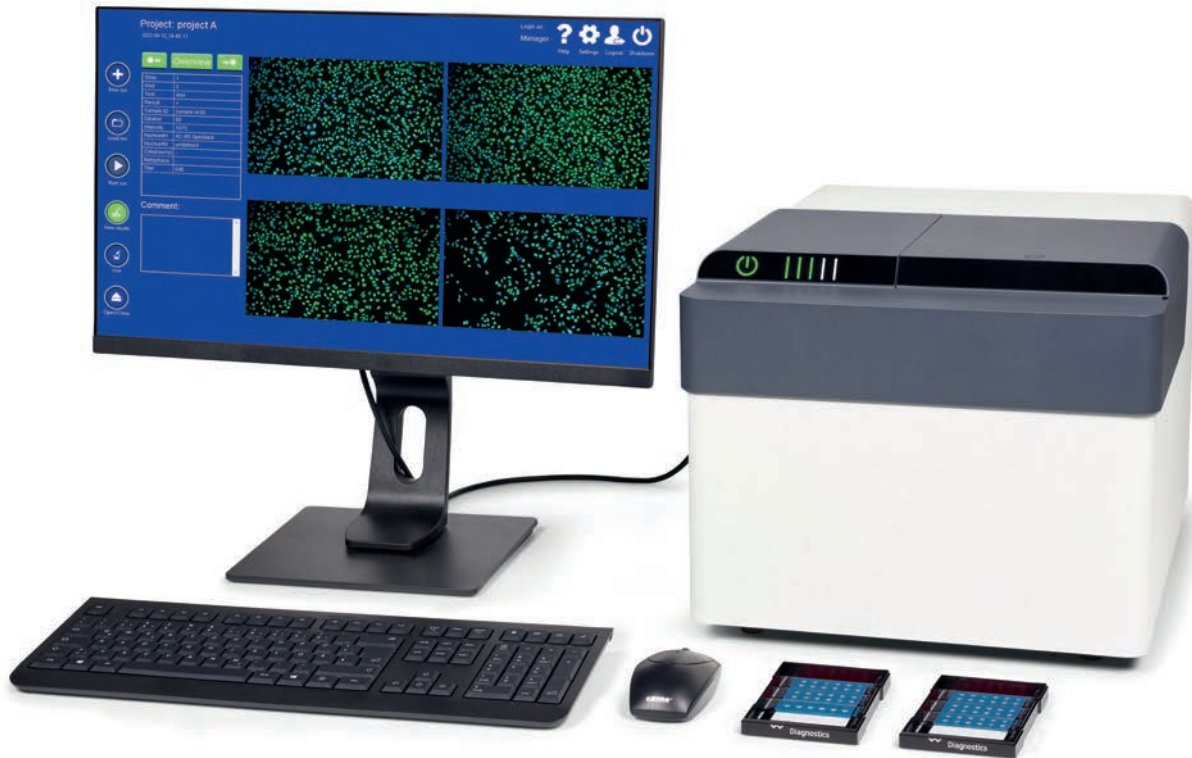
Entry-level automatic indirect immunofluorescence analyzer



- Objective results
- No darkroom required
- Scanning speed: up to 30 sec / well
- Up to 2 slides per scanning session
- Slide digitization and archiving with advanced search queries
- Screening detection
- End titre detection

# MegaFLUO® ScanVet M

Advanced automatic indirect immunofluorescence analyzer



- Objective results
- No darkroom required
- Scanning speed: up to 30 sec / well
- Up to 5 slides per scanning session
- Slide digitization and archiving with advanced search queries
- Screening detection
- End titre detection

	Screening assay & end titre detection
<i>Borrelia canis</i>	available
<i>Borrelia horse</i>	available
<i>Leishmania infantum</i>	available
<i>Encephalitozoon cuniculi</i>	ca. June 2025
<i>Neospora caninum</i>	ca. June 2025
<i>Toxoplasma gondii</i>	ca. June 2025
<i>Ehrlichia canis</i>	ca. August 2025

## Features

### MegaFLUO® ScanVet S

#### Hardware

- ✓ Reflected-light microscope
- ✓ Built-in 40× objective
- ✓ 2.3 MP, CMOS camera
- ✓ Autofocusing technology
- ✓ Built-in filters: FITC, Cy5
- ✓ Scanning speed: up to 30 seconds per well
- ✓ Integrated 10" touch display

#### Software

- ✓ User-friendly touchscreen interface
- ✓ Slide selection, well editor and slide loading
- ✓ Manual or automatic operation
- ✓ Test report can be printed or stored in different formats
- ✓ Atlas/Pattern guide (reference cells and patterns data gallery)
- ✓ LIS/Middleware by most common protocols: Bidirectional, HL7
- ✓ Image acquisition in all fluorescence channels
- ✓ Customer-specific protocol creation
- ✓ Remotely operated and updated by technical support

### MegaFLUO® ScanVet M

#### Hardware

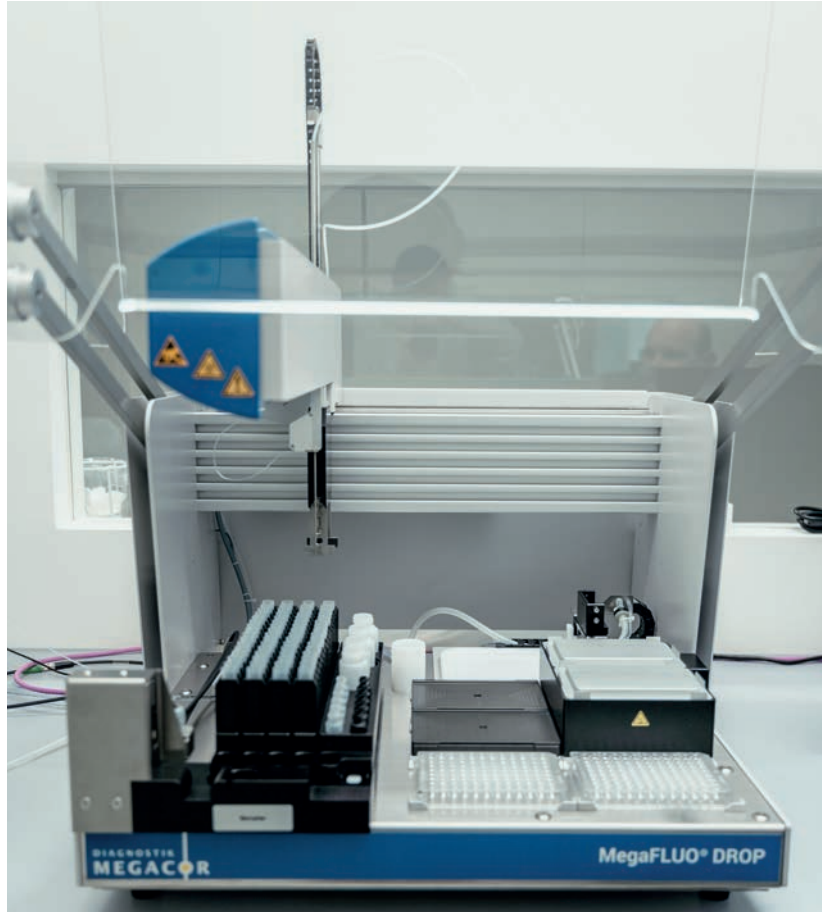
- ✓ Reflected-light microscope
- ✓ Built-in 40× objective
- ✓ 2.3 MP, CMOS camera
- ✓ Motorized xy-positioning
- ✓ Autofocusing technology
- ✓ Built-in filters: FITC, Cy5
- ✓ Scanning speed: up to 30 seconds per well
- ✓ External monitor

#### Software

- ✓ User-friendly interface
- ✓ Slide selection, well editor and slide loading
- ✓ Manual or automatic operation
- ✓ Test report can be printed or stored in different formats
- ✓ Atlas/Pattern guide (reference cells and patterns data gallery)
- ✓ LIS/Middleware by most common protocols: Bidirectional, HL7
- ✓ Image acquisition in all fluorescence channels
- ✓ Customer-specific protocol creation
- ✓ Remotely operated and updated by technical support

# MegaFLUO® DROP

A New Experience in Veterinary Laboratory Automation



- Stand-alone pipetting robot
- Handles all IFA procedure steps
- Compact footprint
- Incubators inside
- Easy to use software

## Technical specifications

---

- ✓ Capacity in 64 serum samples
- ✓ Samples barcode reader
- ✓ Two slides rack, 5 slides capacity each
- ✓ Slides racks for 10 and 12 wells slides
- ✓ Metal cover lids for slides racks
- ✓ Incubation temperature control (37°C)
- ✓ Slides rack humidity control
- ✓ Dilution plate 96 wells (single-use)
- ✓ Titration plate 96 wells (single-use)
- ✓ One washable metal tip for all purposes
- ✓ 8-channel coaxial washing device
- ✓ Reagent rack contains:
  - o Controls: 6 tubes
  - o Conjugates: 6 tubes
  - o Diluents: 2 bottles
  - o Solutions: 2 bottles
- ✓ Waste bottle (Liquid detection sensor inside)
- ✓ Buffer bottle (Liquid detection sensor inside)
- ✓ System rinsing module

### **MEGACOR Diagnostik GmbH**

Lochauer Str. 2 – 6912 Hörbranz – AUSTRIA

[www.megacor.com](http://www.megacor.com) – [✉ fluo@megacor.at](mailto:fluo@megacor.at) – [☎ +43 5573 85400](tel:+43557385400) – [📄 +43 5573 85400-4](tel:+43557385400-4)