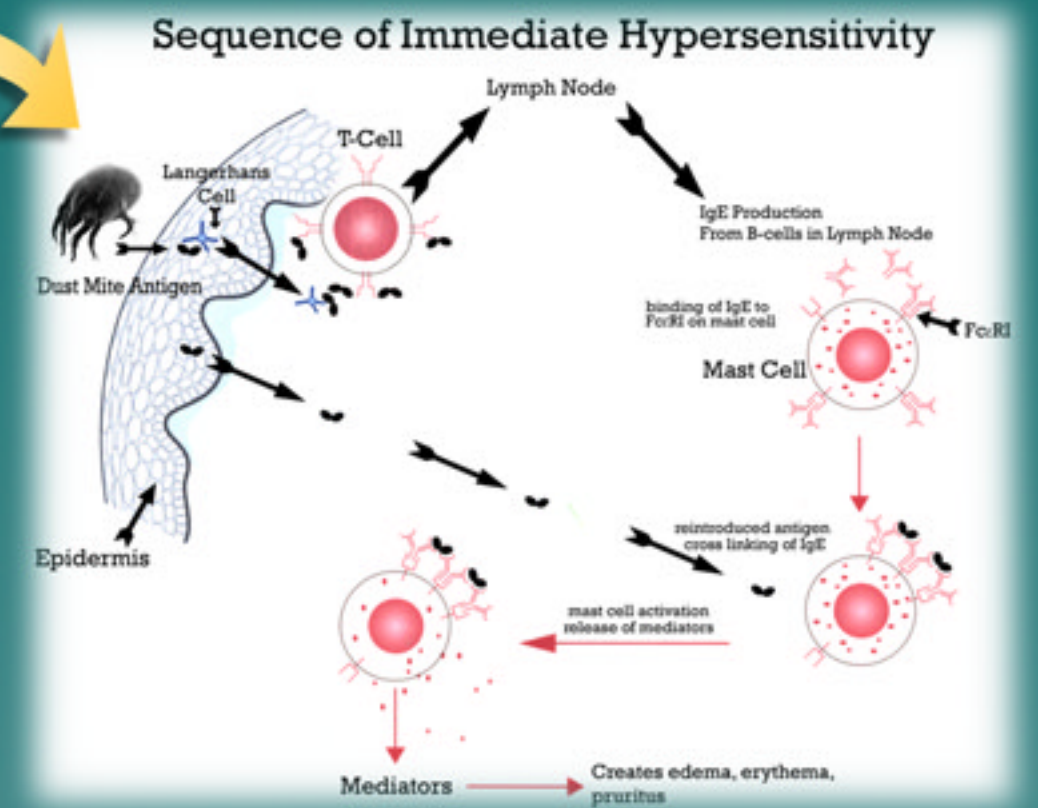


# ATOPIC DERMATITIS IN THE CANINE

Atopic disease refers to any clinical manifestation of atopy. In the dog the predominant manifestation of atopic disease is atopic dermatitis. Atopic dermatitis is the inflammatory and pruritic allergic skin disease associated with IgE antibodies to environmental allergens in genetically predisposed pets.



## Clinical Presentations



Facial, muzzle and in many cases generalized pruritus (itching, licking, scratching, chewing) is seen in the majority of atopic dermatitis cases



Atopic dermatitis is one of the most common causes of otitis externa (ear infections)



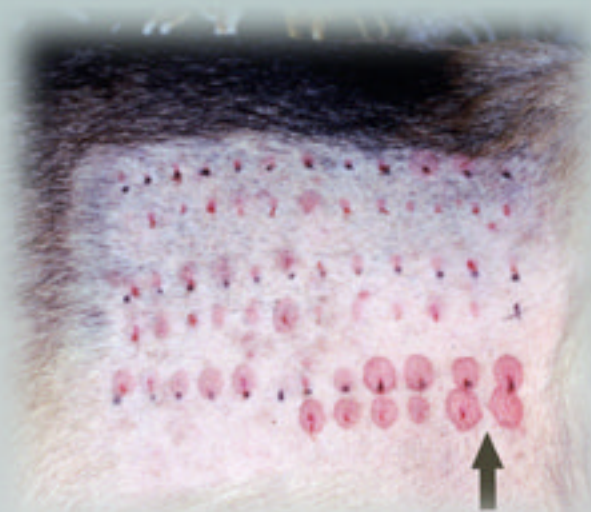
Chronic self-trauma creates thickening and hyperpigmentation to the skin with secondary bacterial and yeast infections



Excessive paw licking and chewing with the development of secondary bacterial and yeast infections often complicates atopic dermatitis

## Diagnosis

- Rule out other diseases food allergy, scabies, secondary infections
- History
- Physical Findings
- Intradermal Testing
- Allergen-Specific IgE Serology
- Housedust Mite Detection (**FASTest**<sup>®</sup>h.d.MITE)



## Therapy

- Avoidance (safest) use for housedust mites, other epidermals and molds
  - \*Environmental Treatment (Anti-Allergen Solution, **DUSTMITE**)
  - \*Housedust Mite Detection (**FASTest**<sup>®</sup>h.d.MITE)
  - \*Air Filtration
  - \*Vacuuming
- Control Allergy Symptoms
  - \*Topical Therapy
  - \*Fatty Acids
  - \*Antihistamines
  - \*Cyclosporine
  - \*Allergen Specific Immunotherapy
  - \*Glucocorticoids
  - \*Immunosuppressives
- Control Secondary Infections (Antibiotics -Antiyeast Therapy)